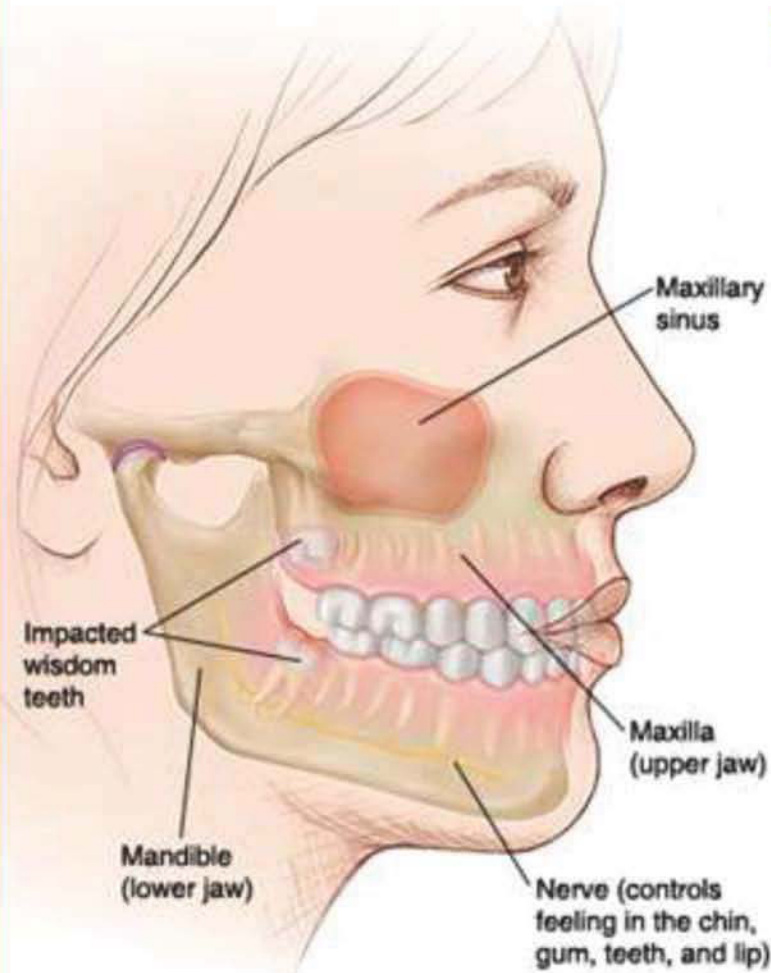


# Normal Anatomy – Dental Implants

Bone Level Normal  
(No Bone Loss)



- Инструменты для имплантологии
- Implantologie
- Implantologie
- Инструменти для імплантології
- Implantologia
- زراعة الأسنان

**IMPLANT GAGES**



**MD-2100**

**Multifunctional Meter**  
Length 90 mm,  
different sizes,  
8-10-11mm,  
corrosion-resistant

**MD-2101**

**Multifunctional Meter**  
Length 90 mm,  
different sizes,  
5-13-15-17 mm,  
corrosion-resistant

**MD-2102**

**Measuring Probe**  
Length 170 mm,  
hand shape or flexible  
(6-8-10-14-16 mm),  
corrosion-resistant

**MD-2103**

**MD-2104**

**MD-2105**

**MD-2106**

**IMPLANT GAGES**



**MD-2107**

**MD-2108**

**MD-2109**

- Инструменты для имплантологии
- Implantologie
- Implantologie

- Инструменти для імплантології
- Implantologia
- زراعة الأسنان



**MD-2110**  
Ridge Mapping  
Double Caliper



**MD-2111**  
Bone Thickness Gauge  
40mm, 180mm



**MD-2112**  
Osteometer  
Measuring Forceps For Jaw  
Ridge Width measurement, scale  
on both sides, rustfree, autoclavable



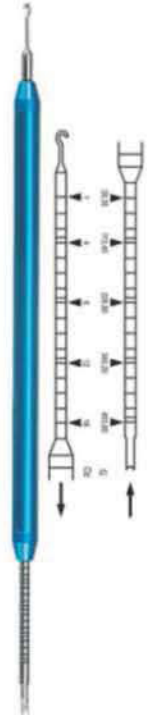
**MD-2113**  
Micro Boley  
Gauge Twisted



**MD-2114**  
Micro Boley  
Gauge Straight



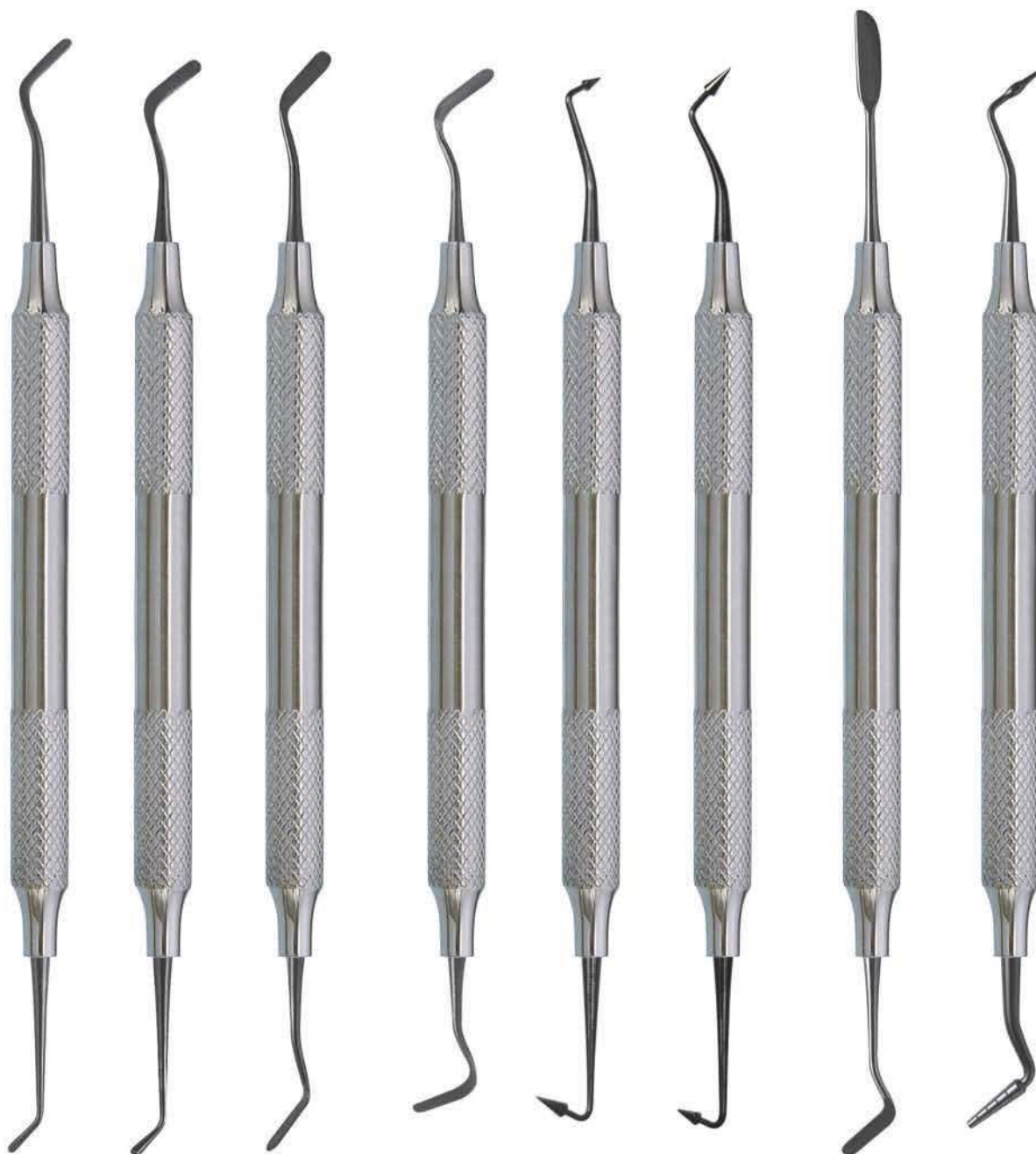
**MD-2115**  
Ortho Ruler / Cone Socket



**MD-2116**  
Dynamometer

- Инструменты для имплантологии
- Implantologie
- Implantologie
- Инструменти для імплантології
- Implantologia
- زراعة الأسنان

**BLACK TITANIUM COLOUR COATED INSTRUMENTS**



**MD-2117**  
#1

**MD-2118**  
#2

**MD-2119**  
#3  
Extra-Flex

**MD-2120**  
#4  
Extra-Flex

**MD-2121**  
#5  
Flexi-Thin

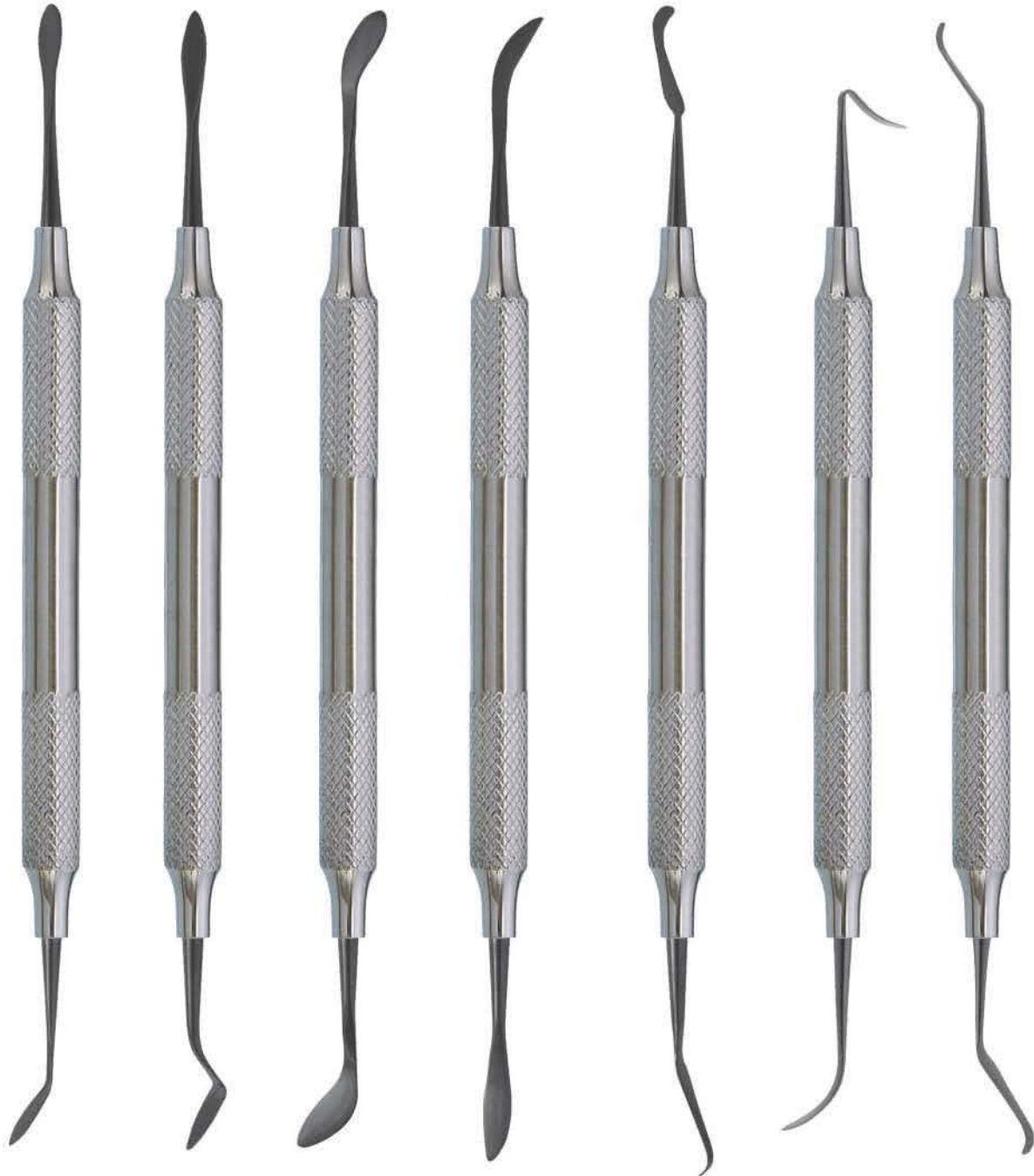
**MD-2122**  
#6  
Flexi-Thin

**MD-2123**  
AB1  
Boghosian

**MD-2124**  
AB2  
Boghosian

- Инструменты для имплантологии
- Implantologie
- Implantologie
- Инструменти для імплантології
- Implantologia
- زراعة الأسنان

## BLACK TITANIUM COLOUR COATED INSTRUMENTS



**MD-2125**  
A  
Cosmetic  
Contouring

**MD-2126**  
B  
Cosmetic  
Contouring

**MD-2127**  
C  
Cosmetic  
Contouring

**MD-2128**  
D  
Cosmetic  
Contouring

**MD-2129**  
F  
Cosmetic  
Contouring

**MD-2130**  
Marginal Ridge  
& Embrasure  
Shaping Instrument

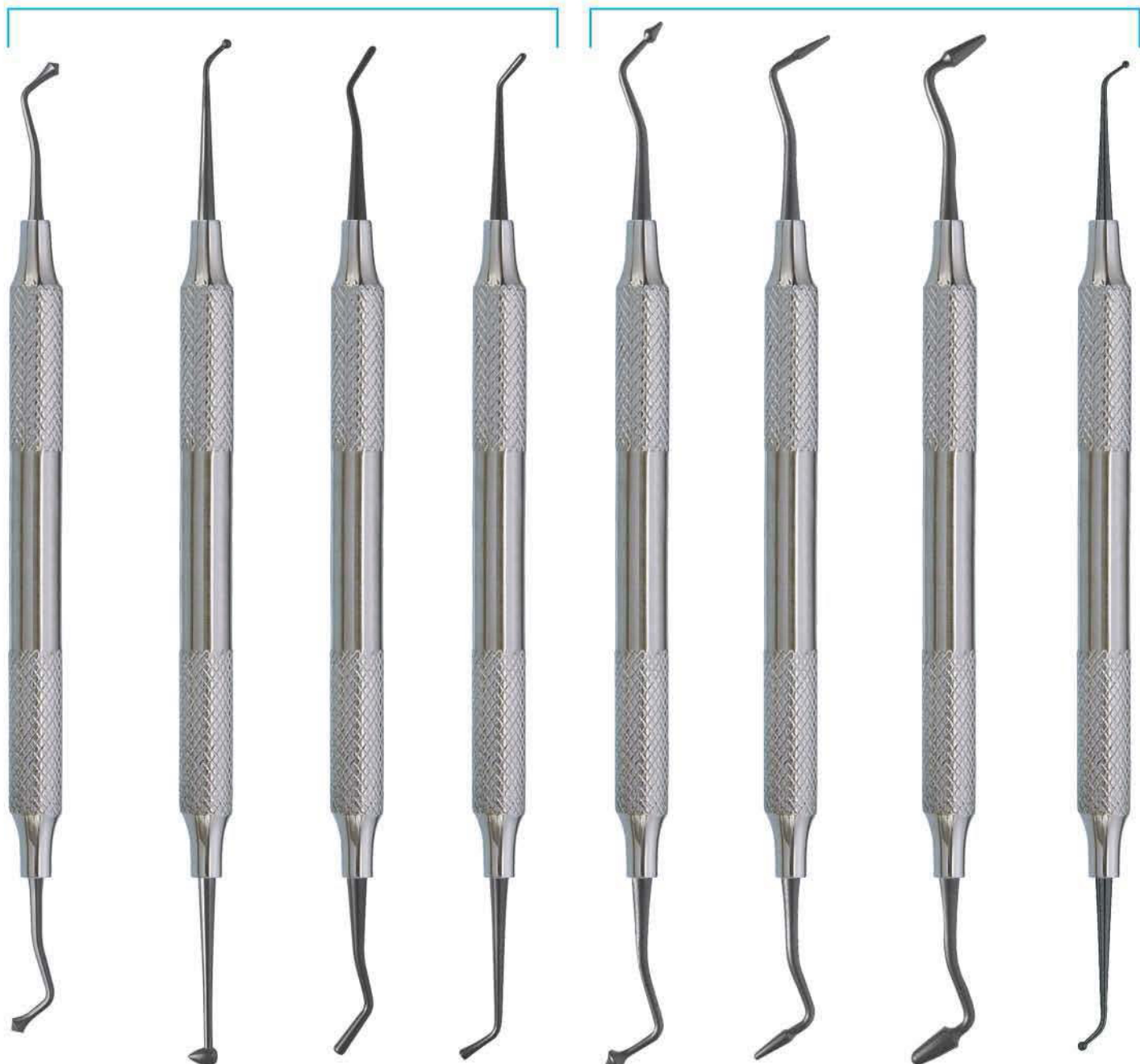
**MD-2131**  
Occlusal  
Anatomy  
Instrument

- Инструменты для имплантологии
- Implantologie
- Implantologie
- Инструменти для імплантології
- Implantologia
- زراعة الأسنان

**BLACK TITANIUM COLOUR COATED INSTRUMENTS**

**BURNISHERS**

**FREEDMAN BURNISHERS**



**MD-2132**  
21B

**MD-2133**  
27/29

**MD-2134**  
2  
Ladmore

**MD-2135**  
3  
Ladmore

**MD-2136**  
Freedman  
"Duckhead"

**MD-2137**  
Freedman  
Small Contact  
Forming

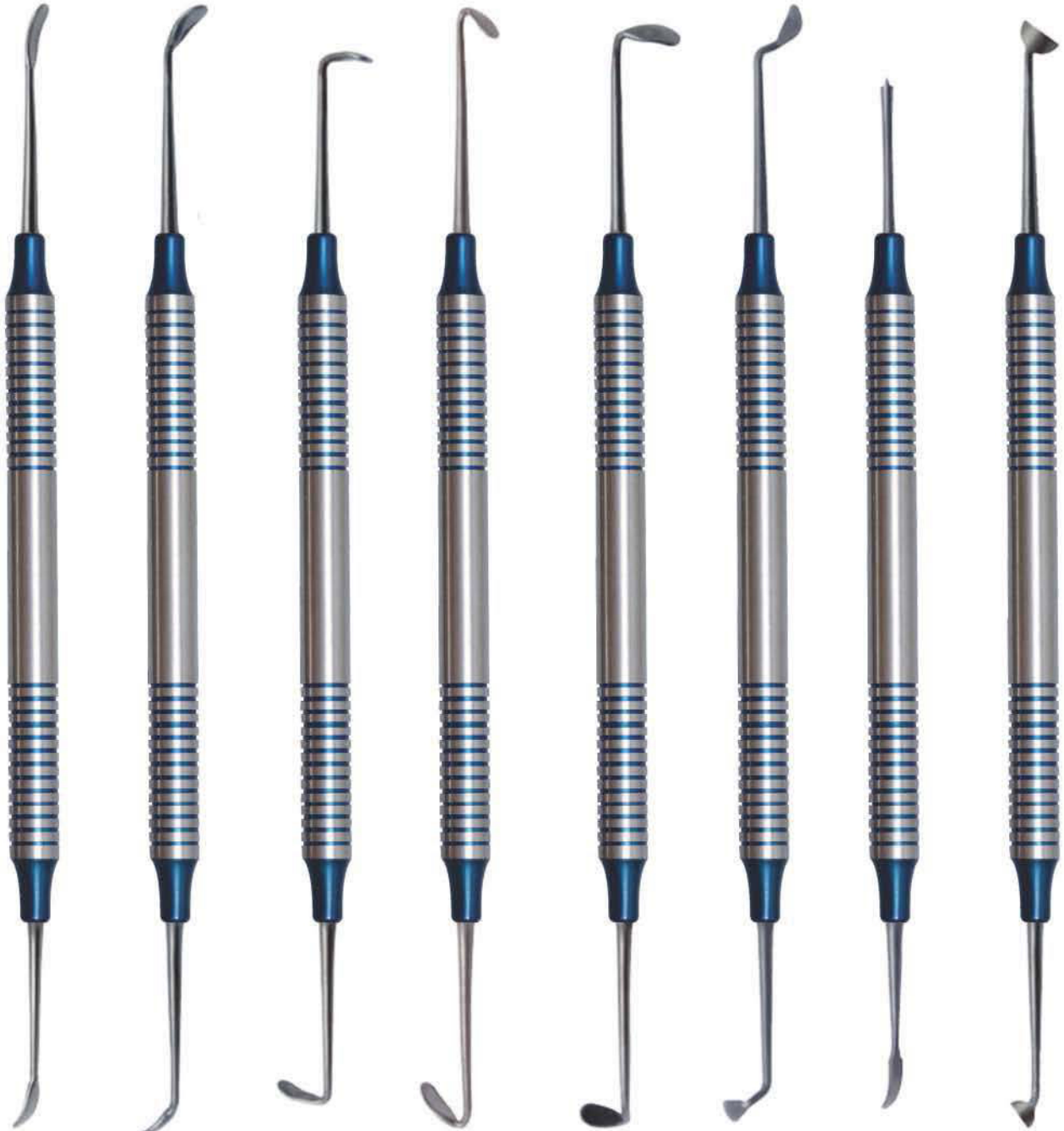
**MD-2138**  
Freedman  
Large Contact  
Forming

**MD-2139**  
Small/  
Medium Ball  
Burnisher

# IMPLANTOLOGY

- Инструменты для имплантологии
- Implantologie
- Implantologie
- Инструменти для імплантології
- Implantologia
- زراعة الأسنان

## SINUS LIFT INSTRUMENTS HOLLOW HANDLE 9.5MM LENGTH 170MM



**MD-2140**  
Sinuslift 1

**MD-2141**  
Sinuslift 2

**MD-2142**  
Sinuslift 3

**MD-2143**  
Sinuslift 4

**MD-2144**  
Sinuslift 5

**MD-2145**  
Sinuslift 6

**MD-2146**  
Membrane  
3Positioning 1

**MD-2147**  
Condenser 1

- Инструменты для имплантологии
- Implantologie
- Implantologie
- Инструменти для імплантології
- Implantologia
- زراعة الأسنان

**Sinus Lift Instrument,**  
Flexible Sinus Lift instruments  
reduce the risk of perforation of the  
"Schneider's membrane"



**MD-2148** Fig. 1  
**MD-2149** Fig. 2  
**MD-2150** Fig. 3

**Sinus Lift Elevator,**  
10 mm Straight grip  
Length 175 mm, Sinus lift elevators, dull,  
for gentle peeling and lifting the  
Schneider membrane



**MD-2151** Fig. 1  
**MD-2152** Fig. 2  
**MD-2153** Fig. 3

**Sinus lift instrument**  
10 mm Straight grip Length 180 mm,  
Buser (B1, B2, B3) raspatories,  
quality medical stainless steel,  
corrosion-resistant

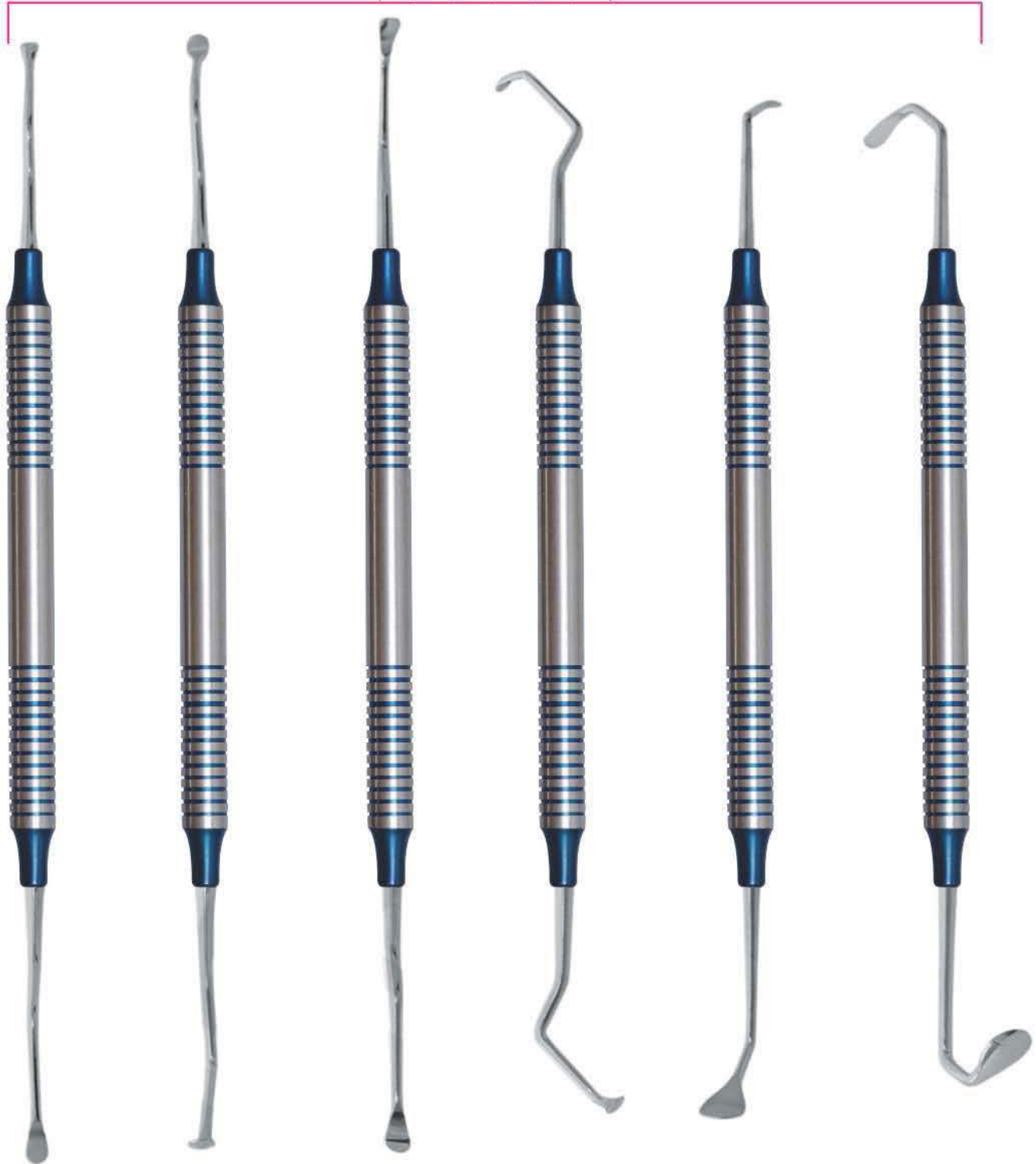


**MD-2154** B01  
**MD-2155** B02  
**MD-2156** B03



- Инструменты для имплантологии
- Implantologie
- Implantologie
- Инструменти для імплантології
- Implantoloia
- زراعة الأسنان

**Sinus lift instrument** 10 mm Straight grip Sinus lift elevators, blunt or sharply curved (H01, H02, K03, K04, K78, K77)



**MD-2157**  
Sinus lift instrument  
H01

**MD-2158**  
Sinus lift instrument  
H02

**MD-2159**  
Sinus lift instrument  
K03

**MD-2160**  
Sinus lift instrument  
K04

**MD-2161**  
Sinus lift instrument  
K78

**MD-2162**  
Sinus lift instrument  
K77

- Инструменты для имплантологии
  - Implantologie
  - Implantologie
- Інструменти для імплантології
  - Implantologia
  - زراعة الأسنان

**Composite Filling Instruments Set of 6 Pcs**



MD-2163



MD-2164



MD-2165



MD-2166



MD-2167



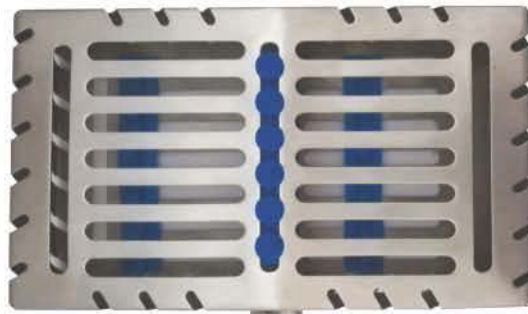
MD-2168

**COMPOSITE INSTRUMENTS USE:**

A composite (tooth colored) filling is used to repair a tooth that is affected by decay, cracks, fractures, etc. The decayed or affected portion of the tooth will be removed and then filled with a composite filling.

There are many types of filling materials available, each with their own advantages and disadvantages. You and your dentist can discuss the best options for restoring your teeth. Composite fillings, along with silver amalgam fillings, are the most widely used today. Because composite fillings are tooth colored, they can be closely matched to the color of existing teeth, and are more aesthetically suited for use in front teeth or the more visible areas of the teeth.

As with most dental restorations, composite fillings are not permanent and may someday have to be replaced. They are very durable, and will last many years, giving you a long lasting, beautiful smile.



MD-2169

- Инструменты для имплантологии
- Implantologie
- Implantologie
- Инструменти для імплантології
- Implantologia
- زراعة الأسنان

Set of 5 Composite Gold Tip Instruments  
**MD-2170**



Set of 4 Composite Blue Tip Instruments  
**MD-2171**



Set of 3 Composite Blue Tip Instruments  
**MD-2172**



Set of 2 Composite Blue Tip Instruments  
**MD-2173**



**MD-2174** Periosteal Elevators Molt # 9

**MD-2175** Endodontic explorer DG # 16

- Инструменты для имплантологии
- Implantologie
- Implantologie
- Инструменти для імплантології
- Implantologia
- زراعة الأسنان

## VISTA TUNNELING INSTRUMENTS SET



MD-2176



MD-2177



MD-2178



MD-2179



MD-2180



MD-2181



MD-2182



# IMPLANTOLOGY

- Инструменты для имплантологии
- Implantologie
- Implantologie

- Инструменти для імплантології
- Implantologia
- زراعة الأسنان



**MD-2183**

used for elevation of sinus membrane



**MD-2184**

used for elevation of sinus membrane



**MD-2185**

Cobra in / out (2-4-5-6-8-10mm)



**MD-2186**

Cobra 3.5mm



**MD-2187**

sinus 4.8 / 5.8 (2-4-5-6-8-10mm)



**MD-2188**

sinus 2.8 / 3.8 (2-4-5-6-8-10mm)



**MD-2189**

Bone Graft 3.8SP / 2.8mm (2-4-5-6-8-10mm)



**MD-2190**

Cobra in / out (2-4-5-6-8-10mm)



**MD-2191**

Cobra 3.5mm



**MD-2192**

Gold Color Set Dental Oral Implantology Sinus Set of 10 Pcs with cassette

- Инструменты для имплантологии
- Implantologie
- Implantologie
- Инструменти для імплантології
- Implantologia
- زراعة الأسنان



**MD-2193**  
Sinus Lift elevator 1



**MD-2194**  
Sinus Lift elevator 2



**MD-2195**  
Sinus Lift elevator 3



**MD-2196**  
Sinus Lift elevator 4



**MD-2197**  
Sinus Lift elevator 5



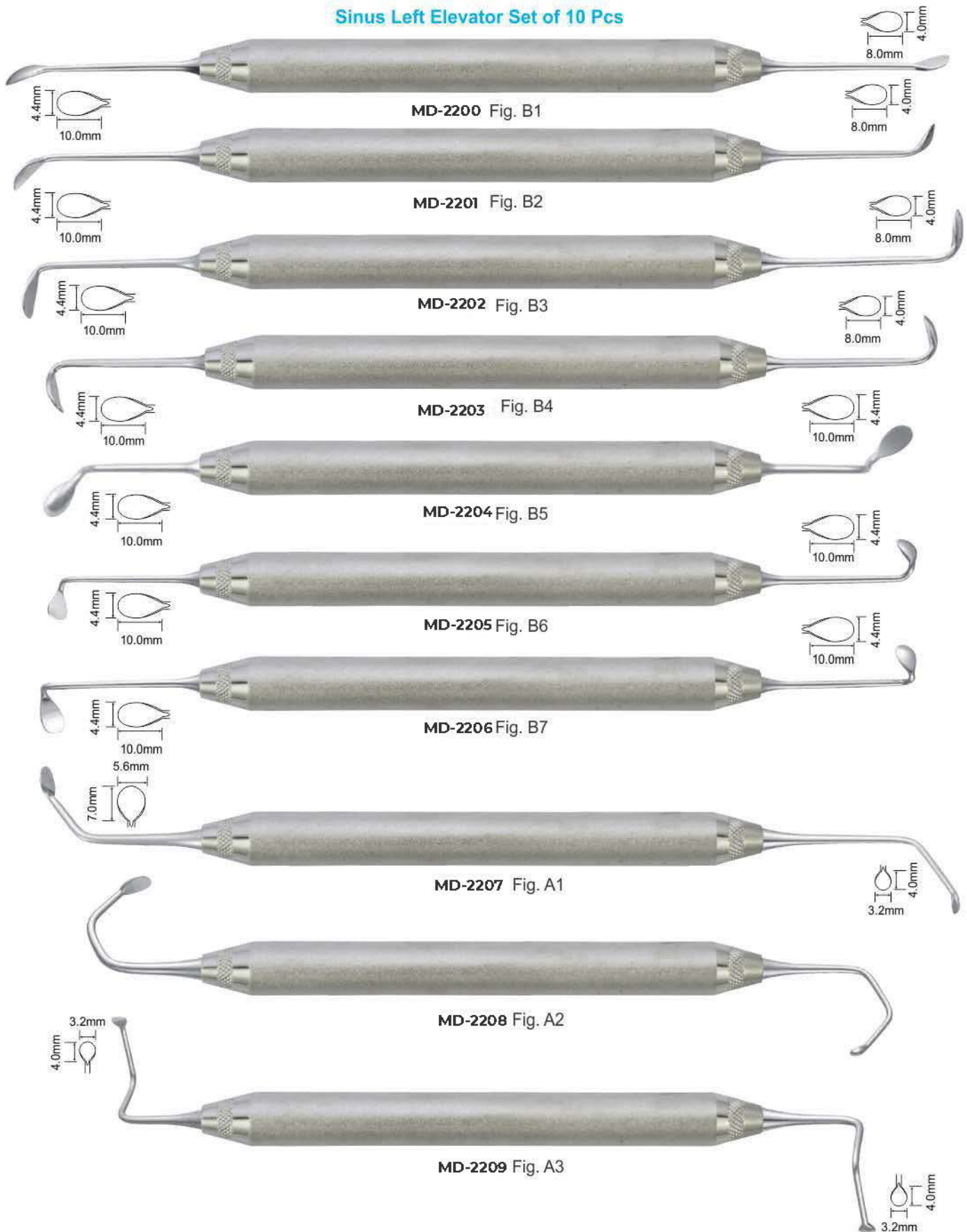
**MD-2198**  
Sinus Lift elevator 6



**MD-2199**  
Sinus Lift Elevators Set of 7 Pcs  
with cassette

- Инструменты для имплантологии
  - Implantologie
  - Implantologie
- Инструменти для імплантології
  - Implantologia
  - زراعة الأسنان

## Sinus Left Elevator Set of 10 Pcs



- Инструменты для имплантологии
- Implantologie
- Implantologie
- Инструменти для імплантології
- Implantologia
- زراعة الأسنان

**Blue Titanium Coated Bone Grafting Instruments**



**MD-2210**

Bone Graft 1.0 / 1.7 mm Titanium 8. 11. 13. 15. 18 mm



**MD-2211**

Bone Graft 1.0 / 2.0 mm Titanium 8. 11. 13. 15. 18 mm



**MD-2212**

Bone Graft 2.4 / 2.7 mm Titanium 8. 11. 13. 15. 18 mm



**MD-2213**

Bone Graft 3.3 / 4.0 mm Titanium 8. 11. 13. 15. 18 mm



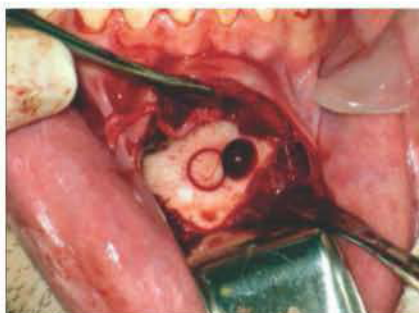
**MD-2214**

Bone Graft 3.3 / 4.0 mm Titanium Coated Tips



**MD-2215**

Bone Graft / Carrier Titanium 8. 11. 13. 15. 18 mm



**MF-2216**

Blue Titanium Coated Bone Grafting Instruments Set of 7 Pcs with cassette



- Инструменты для имплантологии
- Implantologie
- Implantologie

- Инструменти для имплантології
- Implantoloia
- زراعة الأسنان



MD-2227  
Fig. 1



With curette the sinus membrane is further detached over a broad area in the inner region, especially along the roof of the palate.



MD-2218  
Fig. 2



MD-2219  
Fig. 3



MD-2220  
Fig. 4



MD-2221  
Fig. 5



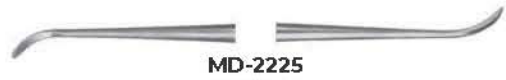
MD-2222  
Fig. 6



MD-2223



MD-2224



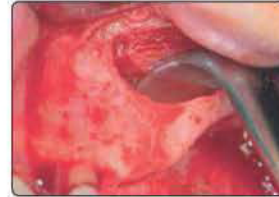
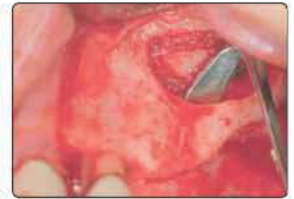
MD-2225



MD-2226



MD-2227



### Flexible Sinus-Lift Curettes – for an optimum sensitivity during the direct lift procedure

The perforation of the Schneiderian membrane is a complication that often occurs during a maxillary sinus floor augmentation procedure. The Sinus-Lift Instruments increase the sensitivity by blunt and flexible working tips with "Swing-Effect". Because of their special shapes and the characteristic of the stainless steel between the handle and the active part, light pressure is cushioned and gives the operator a direct and sensitive response. At the same time the risk to perforate the Schneiderian membrane is reduced to a minimum. Already at the development the focus was a practicable handling. Because of varying angulations and shapes of the active parts also in difficult areas they are easy to navigate also in difficult areas. The line of curettes consists of six different figures for every situation. They are complemented by spoon and condenser to place the bone graft.



The "Schneider's Membrane" of the sinus can be detached with curette by 1–2mm along the total cortical bone.



Curette is particularly useful in the lower part for detaching the membrane further. The same goes for the caudal area, especially when the membrane is 4–5 mm above the base of the maxillary sinus and the maxillary sinus is built up with granular material.



Curette makes it possible to lift the membrane further in mesial region. One working tip is especially designed for the right maxillary sinus and the other for the left maxillary sinus.

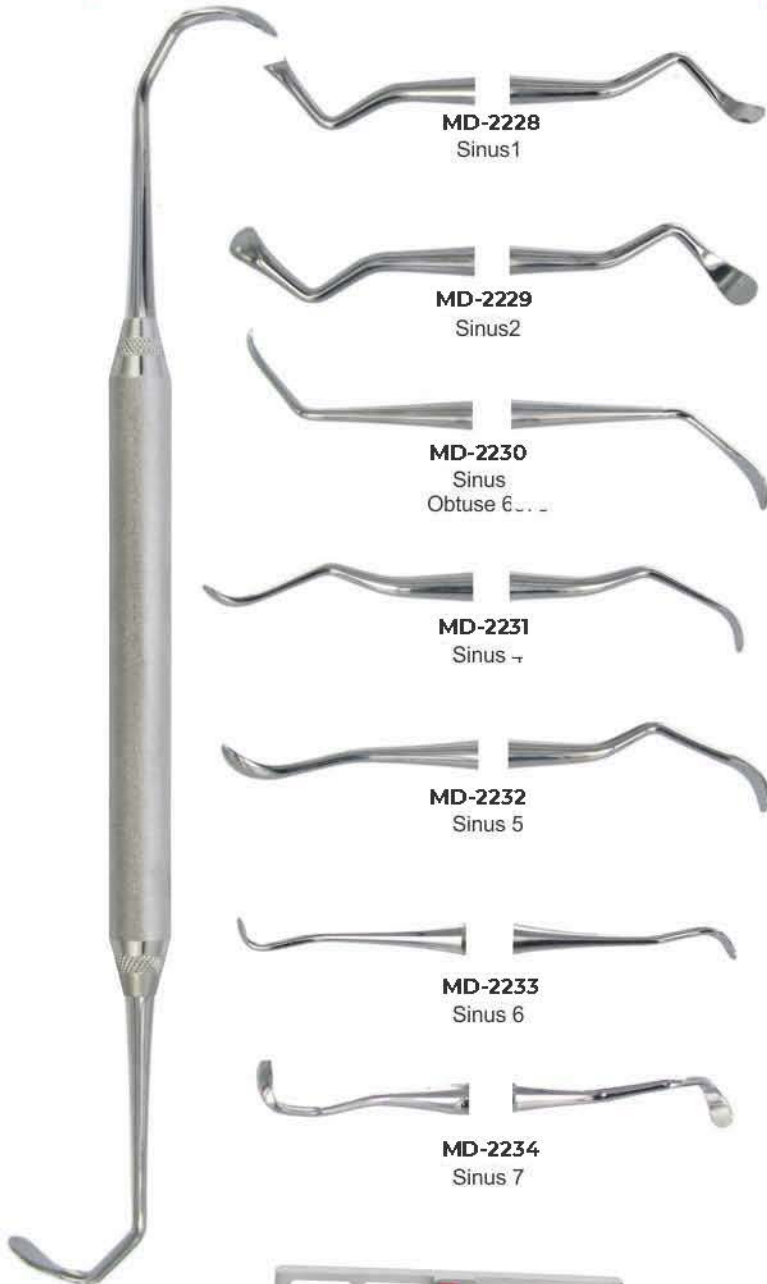


With curette the sinus membrane is further elevated in the upper and posterior part of the maxillary sinus wall.

- Инструменты для имплантологии
  - Implantologie
  - Implantologie
- Инструменти для імплантології
  - Implantologia
  - زراعة الأسنان

**IMPLANT SINUS LIFT INSTRUMENTS HOLLOW HANDLE 9.5MM LENGTH 170MM**

**SINUS LIFT INSTRUMENTS HOLLOW HANDLE 9.5MM LENGTH 170MM**



**MD-2242**  
Acute 6577



**MD-2243**  
Sinuslift 1



9 Pcs of Set  
**MD-2244**



9 Pcs of Set  
**MD-2245**

- Инструменты для имплантологии
- Implantologie
- Implantologie

- Инструменти для имплантології
- Implantologia
- زراعة الأسنان

IMPLANT SINUS LIFT INSTRUMENTS  
 PERIODONTAL SURGERY SURGICAL CHISELS  
 KRAMER NEVINS SINUS LIFT

**SURGICAL CHISELS**



MD-2246  
TG



MD-2247 SOLT3/4



MD-2248 TGO



MD-2249 OCH3



MD-2250 OCH4



MD-2251 FED1



MD-2252 FED2



MD-2253 FED3



MD-2254 13K/TG



MD-2255  
13K/TG Titanium



MD-2256 13K/TG



MD-2257  
13KL/R Titanium

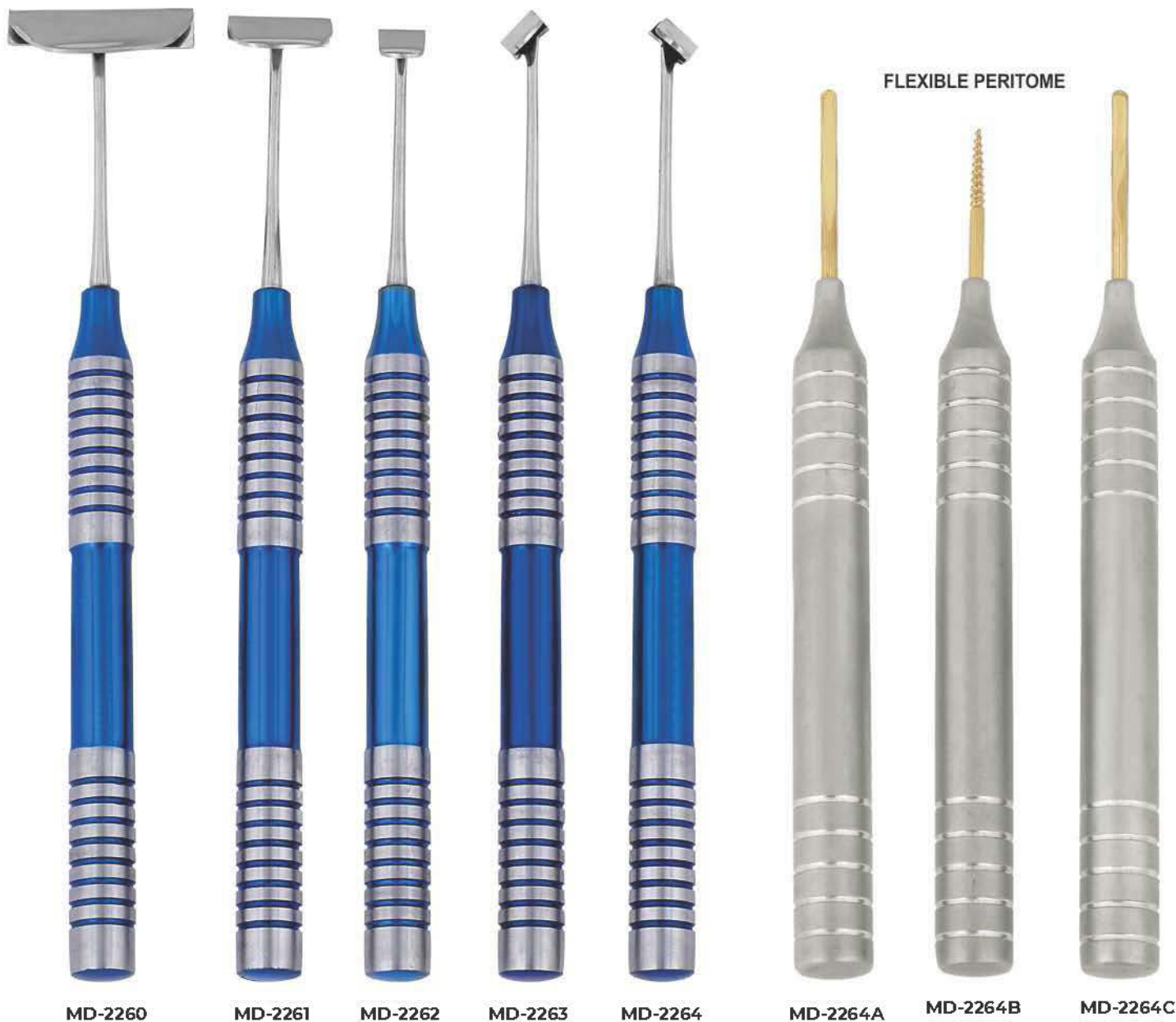


MD-2258 13KL 4/6mm  
Titanium Available



MD-2259  
Cassette For Instruments

- Инструменты для имплантологии
- Implantologie
- Implantologie
- Инструменти для імплантології
- Implantologia
- زراعة الأسنان



Soft Brushing Kit Set of 6 Pcs



- Инструменты для имплантологии
  - Implantologie
  - Implantologie
- Інструменти для імплантології
  - Implantoloia
  - زراعة الأسنان

## SINUS ELEVATOR & MEMBRANE LIFT TIPS



**MD-2265**  
Membrane Detach Elevator



**MD-2266**  
Membrane Elevator



**MD-2267**  
Membrane Elevator



**MD-2268**  
Membrane Elevator



**MD-2269**  
Membrane Elevator



**MD-2270**  
Bone Graft Packer



**MD-2270A** Pt2 Titanium  
A/V Regular



**MD-2270B** Pt1 Titanium  
A/V Regular



**MD-2270C** Pt3 Titanium Angel S/E



**MD-2270D** Pt4 Titanium STR S/E



**MD-2270E** Pt5 Titanium TG CVD S/E



**MD-2271**  
Sinus Left Elevator & Membrane Lift Tips  
set of 7 Pcs

- Инструменты для имплантологии
- Implantologie
- Implantologie
- Инструменти для імплантології
- Implantologia
- زراعة الأسنان

**MIXING SPATULA WITH SHOVEL**



**MD-2272**  
Bone Carrier  
Titanium



**MD-2273**  
Raspator, Prichard  
Length 180 mm,  
10 mm hollow handle,  
double-ended  
10.5 mm | 4.5 mm,



**MD-2274**  
Raspator, Prichard  
Length 180 mm,  
10 mm hollow handle,  
double ended



**MD-2275**  
Raspator, Prichard  
Length 180 mm,  
10 mm hollow handle,  
double-ended  
10.5 mm | 4.5 mm,



**MD-2276**  
Mixing Spatula  
with shovel  
17cm



**MD-2277**  
Mixing Spatula  
with shovel  
18.5cm



**MD-2278**  
Graft Material Spoon  
Concave Tip For  
Larger Grafts

# IMPLANTOLOGY

- Инструменты для имплантологии
  - Implantologie
  - Implantologie
- Инструменти для имплантології
  - Implantologia
  - زراعة الأسنان

**BONE GRAFTING INSTRUMENTS COMPACTOR /TAMPERS**

Product offering includes instruments for harvesting, mixing and compacting bone Provides clinicians with the proper instrumentation for bone grafting procedures Weighted bone basin Prevents tipping and spilling of bone and other materials during mixing



**MD-2279**  
Graft Packer, Concave Tips DE 4/6mm



**MD-2280**  
Bone Spoon/ Packer DE 3mm



**MD-2281**  
Blade and pusher Length 180 mm, for straight or angled, blade: 15 x 5 mm, pusher: 4 mm diameter Straight



**MD-2282**  
Blade and pusher Length 180 mm, for straight or angled, blade: 15 x 5 mm, pusher: 4 mm diameter angular



**MD-2283**  
Spoon and pusher Length 180 mm, for angled spoon: 10 x 5 mm, pusher: diameter 3 mm



**MD-2284**  
Graft Packer, Smooth Tips DE 5/8mm



**MD-2285**  
Graft Packer, Serrated Tips DE 3/4mm



**MD-2286**  
Graft Packer, Serrated Tips DE 6/8mm



**MD-2287**  
Titanium graft packer/placement site depth gauge 3.3mm & 4.0mm Diameter tips Marked at 8, 11, 13, 15 & 18mm

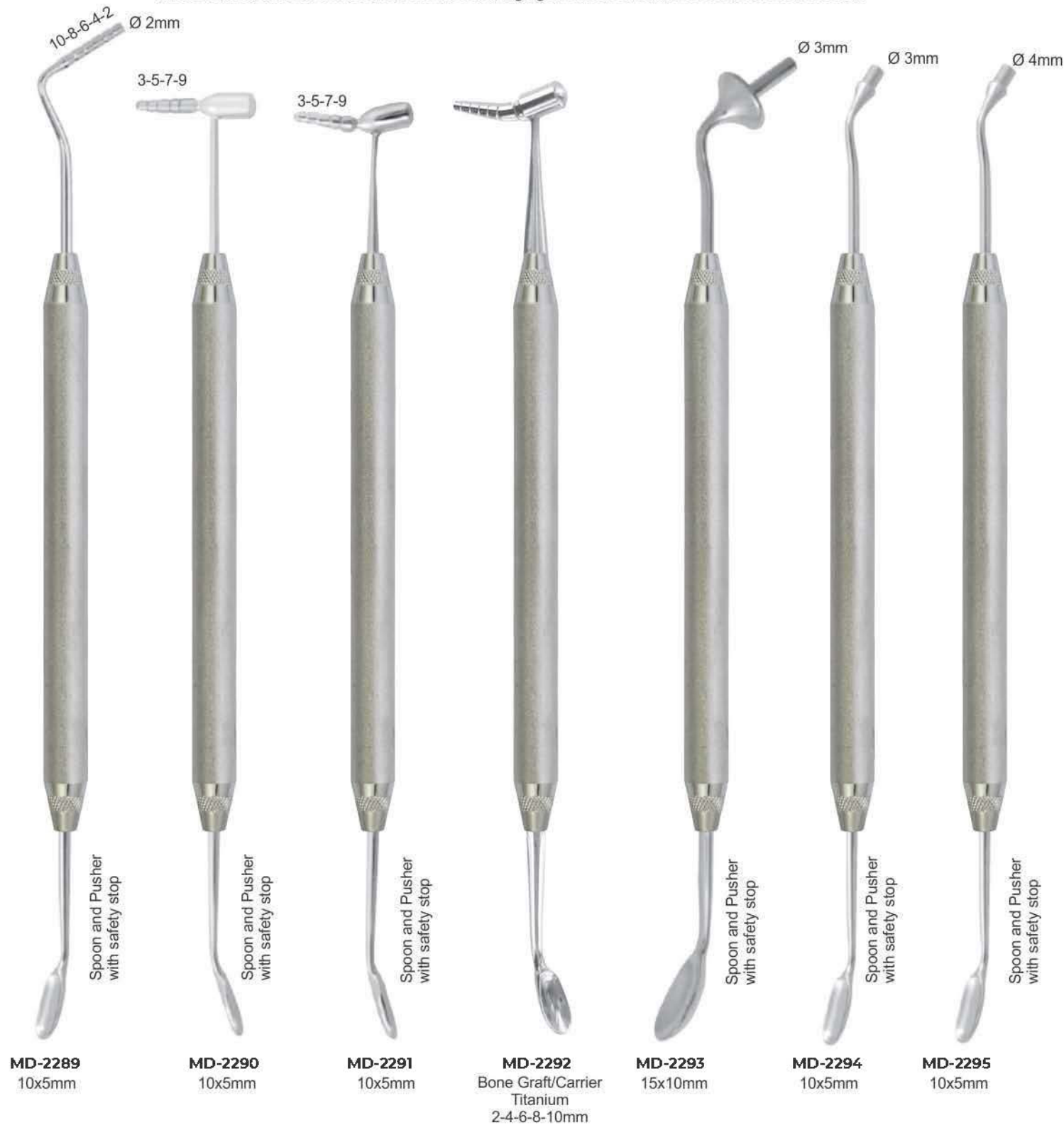


**MD-2288**  
Tamper Length 170 mm, for bone material, double-ended, diameter 3.2 mm (2-4-6-8-10) and diameter 2.5mm (2-4-6-8-10)

- Инструменты для имплантологии
  - Implantologie
  - Implantologie
- Інструменти для імплантології
  - Implantologia
  - زراعة الأسنان

**SPOON AND PUSHER (TRINOVO)**

Trinovo handle, different workers, for bone material, high-grade medical stainless steel, corrosion-resistant





# IMPLANTOLOGY

- Инструменты для имплантологии
- Implantologie
- Implantologie

- Инструменти для імплантології
- Implantoloia
- زراعة الأسنان

Hollow Handle 10mm Length 170mm



- Инструменты для имплантологии
- Implantologie
- Implantologie
- Инструменти для імплантології
- Implantologia
- زراعة الأسنان

**TISSUE MEMBRANE FORCEPS**



**MD-2305**  
Tissue Graft Forcep  
Serrated Teeth



**MD-2306**  
Self Locking  
Grooved



**MD-2307**  
Tissue Graft Forcep  
Serrated Teeth



**MD-2308**  
Titanium  
Locking Plier



**MD-2309**  
TC Gripper Carbide  
Tipped Tissue Forceps  
Serrated Carbide Tips  
14.5cm



**MD-2310**  
Adson Carbide  
Tipped Tissue Forceps  
Serrated Carbide Tips  
12cm



**MD-2311**  
Micor Adson 1x2  
Tissue Forcep 12.1cm  
1x2 Teeth - 0.5mm Tips



**MD-2312**  
Adson 7x7  
Tissue Forceps  
7x7 Teeth 12cm



**MD-2313**  
Adson 7x7 Curved  
Tissue Forceps  
7x7 Teeth 12cm



**MD-2314**  
Suture Pliers  
Suture Forceps with  
1.6mm Ring Tip



**MD-2315**  
Debaquey Atraumatic  
Tissue Forceps Straight  
Serrated Teeth  
16cm



**MD-2316**  
Debaquey Atraumatic  
Tissue Forceps Curved  
Serrated Teeth  
16cm

- Инструменты для имплантологии
  - Implantologie
  - Implantologia
- Инструменти для имплантології
  - Implantologia
  - زراعة الأسنان

## TISSUE MEMBRANE FORCEPS



**MD-2317**  
Russian Long  
Tissue Forceps  
Serrated Tip  
20cm



**MD-2318**  
Russian  
Tissue Forceps  
Serrated Tip  
15cm



**MD-2319**  
Tissue Punch Forceps  
To Remove Tissue  
After Using Punch



**MD-2320**  
13.5 cm  
narrow



**MD-2321**  
10.5 cm  
**Membrane tweezers KUEHNE**



**MD-2322**  
13.5 cm  
wide



**MD-2323**  
**Pin-Tweezers**  
with or without lock,  
length 15 cm,  
with lock



**MD-2324**  
without lock



**MD-2325**  
**Haltepinzette with lock**  
15,5 cm, for pins, towards  
the tips, etc



**MD-2326**  
**Carry Forceps**  
15cm



**MD-2327**  
**Carry Forceps**  
15cm



**MD-2328**  
**Carry Forceps**  
15cm

- Инструменты для имплантологии
- Implantologie
- Implantologie
- Инструменти для імплантології
- Implantologia
- زراعة الأسنان

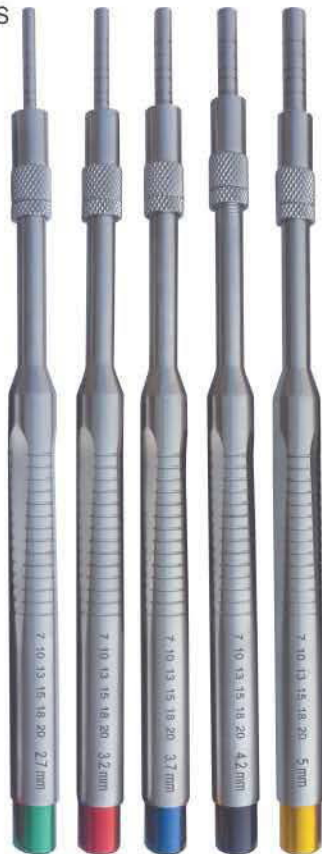
## OSTEOTOME CONVEXES / CONCAVE / CONIQUES

CONVEXES



**MD-2329**  
SET OF 5 PIECES

CONCAVES

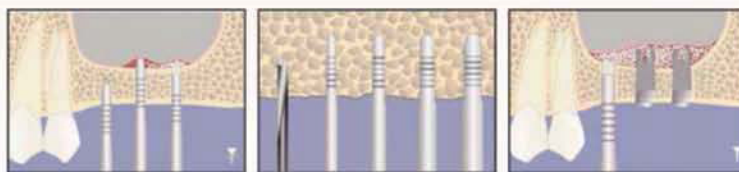


**MD-2330**  
SET OF 5 PIECES

CONIQUES



**MD-2331**  
SET OF 5 PIECES



	CONVEXES STRAIGHT	<b>MD-2329</b>	2,7 Ømm	3,2 Ømm	3,7 Ømm	4,2 Ømm	5 Ømm
	CONCAVES STRAIGHT	<b>MD-2330</b>	2,7 Ømm	3,2 Ømm	3,7 Ømm	4,2 Ømm	5 Ømm
	CONIQUES STRAIGHT	<b>MD-2331</b>	2,7 Ømm	3,2 Ømm	3,7 Ømm	4,2 Ømm	5 Ømm

- Инструменты для имплантологии
  - Implantologie
  - Implantologie
- Инструменти для имплантології
  - Implantoloia
  - زراعة الأسنان

## OSTEOTOME CONVEXES / CONCAVE / CONIQUES

CONVEXES



**MD-2332**  
SET OF 5 PIECES

CONCAVES

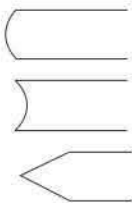
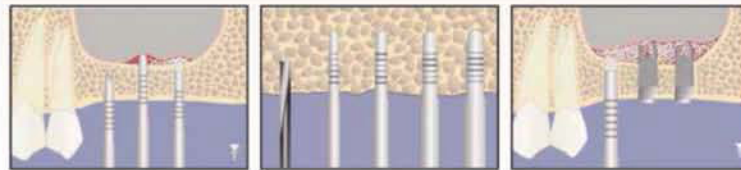


**MD-2333**  
SET OF 5 PIECES

CONIQUES



**DE-2334**  
SET OF 5 PIECES



CONVEXES CURVED	<b>MD-2332</b>	2,7 Ømm	3,2 Ømm	3,7 Ømm	4,2 Ømm	5 Ømm
CONCAVES CURVED	<b>MD-2333</b>	2,7 Ømm	3,2 Ømm	3,7 Ømm	4,2 Ømm	5 Ømm
CONIQUES CURVED	<b>MD-2334</b>	2,7 Ømm	3,2 Ømm	3,7 Ømm	4,2 Ømm	5 Ømm

- Инструменты для имплантологии
- Implantologie
- Implantologie
- Инструменти для імплантології
- Implantologia
- زراعة الأسنان

**BONE SCRAPER STRAIGHT & CURVED**



**MD-2335**  
Bone Scraper  
Straight

**MD-2336**  
Bone Scraper  
Curved

**TISSUE PUNCH STRAIGHT & CURVED**



Tissue Punch  
Straight

Tissue Punch  
Curved

**MD-2337**  
2.0mm

**MD-2338**  
4.0mm

**MD-2339**  
5.0mm

**MD-2340**  
6.0mm

**MD-2341**  
7.0mm

**MD-2342**  
8.0mm

**MD-2343**  
2.0mm

**MD-2344**  
4.0mm

**MD-2345**  
5.0mm

**MD-2346**  
6.0mm

**MD-2347**  
7.0mm

**MD-2348**  
8.0mm

Ø4.0    Ø5.0    Ø6.0    Ø7.0



**MD-2349**  
Tissue Punch with pin  
Set of Four Pieces



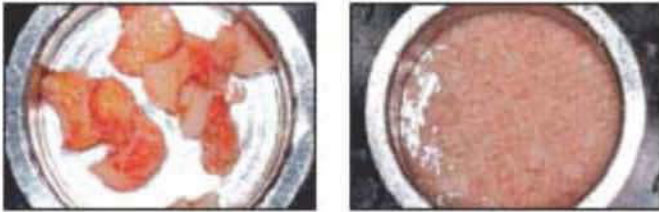
**MD-2350**  
Tissue Punch  
Set of Five Pieces



**MD-2351**  
Tissue Punch  
Set of Five Pieces

- Инструменты для имплантологии
- Implantologie
- Implantschirurgie
- Инструменти для имплантології
- Implantologia
- زراعة الأسنان

## BONE MILL BONE WELL



- Инструменты для имплантологии
  - Implantologie
  - Implantologie
- Інструменти для імплантології
  - Implantologia
  - زراعة الأسنان

**TREPHINE**

Burs with depth markings are suited for precise and simple transplantation of cylindrical bone grafts as well as for all other bone-extraction tasks.

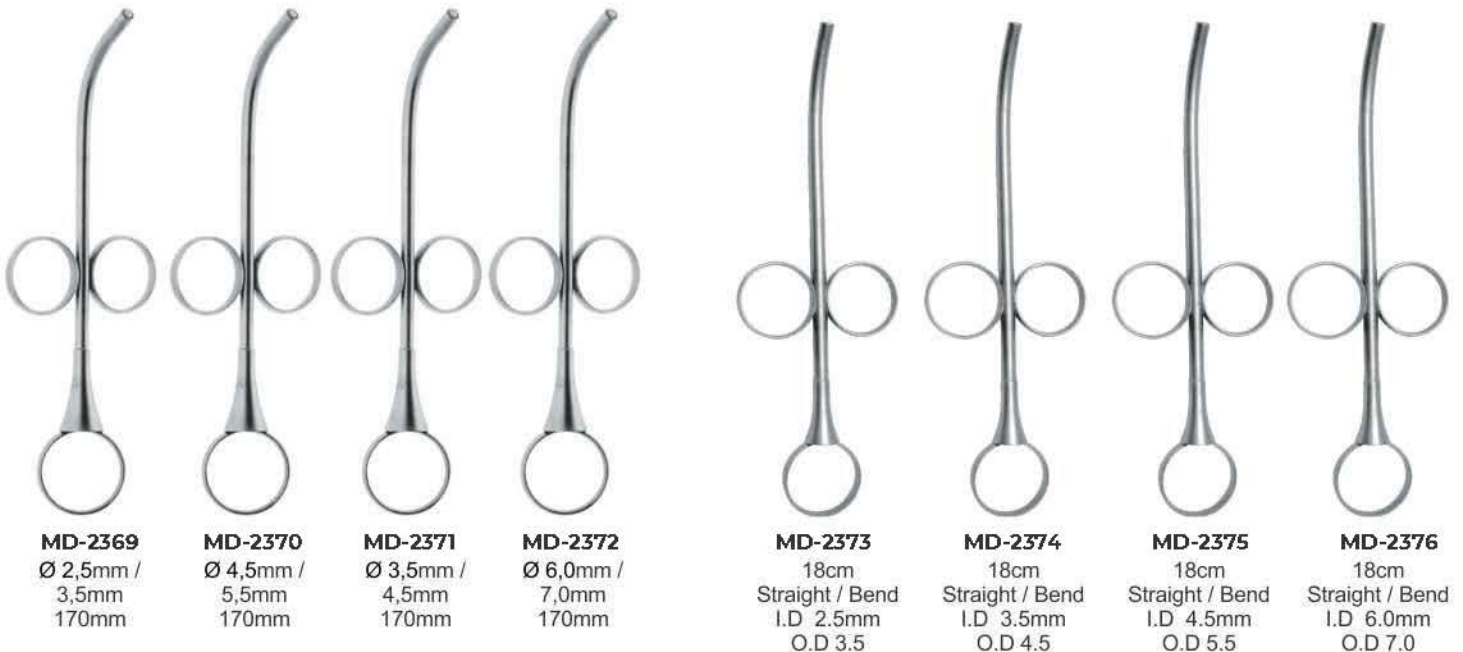


**MD-2367**  
Trepine Drill  
Set of Eight Pieces



**MD-2368**  
Trepine Drill  
Set of Eight Pieces

**BONE INJECTORS, COLLECTORS & SUCTION TUBE**





- Инструменты для имплантологии
- Implantologie
- Implantologie
- Инструменти для имплантології
- Implantoloia
- زراعة الأسنان

## BONE EXPANDER SCREW & SURGICAL KITS



Ø2.0mm    Ø2.5mm    Ø2.8mm

**DE-2377** Short Implant Drills



Ø3.2mm    Ø3.65mm    Ø4.2mm    Ø5.2mm

**MD-2378** Long Implant Drills



**MD-2379**

### Bone Universal Kit

Drill: 2mm, 2.8mm, 3.2mm, 3.65mm, 4.2mm, 4.5mm, 4.8mm, 5.2mm  
 Trephines Bit: 3.0mm, 4.0mm, 5.0mm, 6.0mm, 7.0mm, 8.0mm, 9.0mm, 10mm.  
 Driver: 2.5mm, 2.5mm Hand Pcs, 1.25mm, 1.25mm Hand Pcs  
 Short Driver 2.5mm, Long Driver 2.5mm  
 1.25mm, Short Hex Driver Hand Pcs  
 1.25mm, Long Hex Driver Hand Pcs, Torque Wrench 4.0mm



**MD-2380**

### Bone Expander Kit

Expander: 2.6mm, 3.0mm, 3.4mm, 3.8mm, 4.3mm  
 Ratchet Driver, Parallel Pin  
 Pilot Drill, Drill 1.4mm, Drill Driver 4mm  
 Hand Driver 4mm, Ratchet 4.0mm



**MD-2381**

### Bone Universal Kit

Drill: 2mm, 2.8mm, 3.2mm, 3.65mm,  
 4.2mm, 4.5mm, 4.8mm, 5.2mm  
 Trephines Bit:  
 3.0mm, 4.0mm, 5.0mm, 6.0mm,  
 7.0mm, 8.0mm, 9.0mm, 10mm.

### Bone Compression:

2mm, 3.3mm, 2.8mm, 4.2mm, 3mm, 3.5mm  
 Driver:  
 2.5mm, 2.5mm Hand Pcs  
 1.25mm, 1.25mm Hand Pcs  
 Short Driver 2.5mm  
 Long Driver 2.5mm  
 1.25mm, Short Hex Driver Hand Pcs  
 1.25mm, Long Hex Driver Hand Pcs  
 Torque Wrench 6.35mm 1 Pcs



**MD-2382**

### Conical Drills: 20 Pcs

Tissue Punches:  
 3.0mm, 3.50mm, 4.0mm, 4.5mm,  
 5.0mm, 6.0mm, 6.50mm  
 Bone Expander:  
 1.6/3.8mm, 1.9/3.0mm, 2.1/3.6mm,  
 2.6/3.8mm, 2.9/4.3mm  
 Drill Adapter: 1 Pcs  
 1.25mm, 2.50mm Hex Driver Hand Pcs

### Pilot Drill: 1.6mm

Drill Bit: 1.4mm, 1.6mm, 1.8mm, 2.0mm, 2.2mm  
 Ratchet Driver: 4mm/6.35, 1.25/2.50  
 Rimer: 3.2/4.7mm, 3.7/4.7mm  
 Parallel Pin: 4.5mm, 2.5mm  
 Double step Drill: 2.4/2.8mm  
 Depth Gauge: 1 Pcs  
 Torque Wrench 6.35mm Universal: 1 Pcs

- Инструменты для имплантологии
- Implantologie
- Implantologie
- Инструменти для імплантології
- Implantologia
- زراعة الأسنان

**KEYS FOR IMPLANT SCREW**



MD-2383

MD-2384

MD-2385

MD-2386

**TORQUE WRENCH & RATCHET**



MD-2387 Star Torque Wrench 6.35mm Universal

MD-2393 Star Torque Wrench 6.35mm Universal

MD-2399 Star Ratchet Wrench 6.35mm Universal

MD-2388 Round Torque Wrench 4.0mm Universal

MD-2394 Star Torque Wrench 6.35mm Universal

MD-2400 Star Ratchet Wrench 4.0mm Universal

MD-2389 Hex Driver With 4.0mm Driver

MD-2395 Star Torque Wrench 6.35mm Universal

MD-2401 Round Ratchet Wrench 4.0mm Universal

MD-2390 Star Torque Wrench 6.35mm Universal

MD-2396 Star Torque Wrench 6.35mm Universal

MD-2402 Round Ratchet Wrench 3.35mm Universal

MD-2391 Hex Torque Wrench 4.00mm Universal

MD-2397 Star Ratchet Wrench 6.35mm Universal

MD-2403 Star Ratchet Wrench 4.0mm Universal

MD-2392 Star Torque Wrench 6.35mm Universal

MD-2398 Star Ratchet Wrench 6.35mm Universal

MD-2404 Star Ratchet Wrench 6.35mm Universal

# IMPLANTOLOGY

- Инструменты для имплантологии
- Implantologie
- Implantsologie
- Инструменти для імплантології
- Implantologia
- زراعة الأسنان



**MD-2405**  
Suction Cannula Kit  
with 3 Needles



Suction Pipe



Suction Needle  
1mm



Suction Needle  
1.5mm



Suction Needle  
2mm



**MD-2406**  
17.5cm

**MD-2407**  
18cm

**DE-2408**  
coarse  
Ø 5mm

Suction tubes  
to collect  
the extracted  
bone material  
180mm



**DE-2409**  
fine  
Ø 9mm



**MD-2410**  
Suction  
Tubes  
180mm

**MD-2411**  
Suction  
Tubes  
180mm

**MD-2412**  
Suction  
Tubes  
180mm



**MD-2413**  
Fig. 6FR  
Frazier  
15 cm - Ø 2 mm

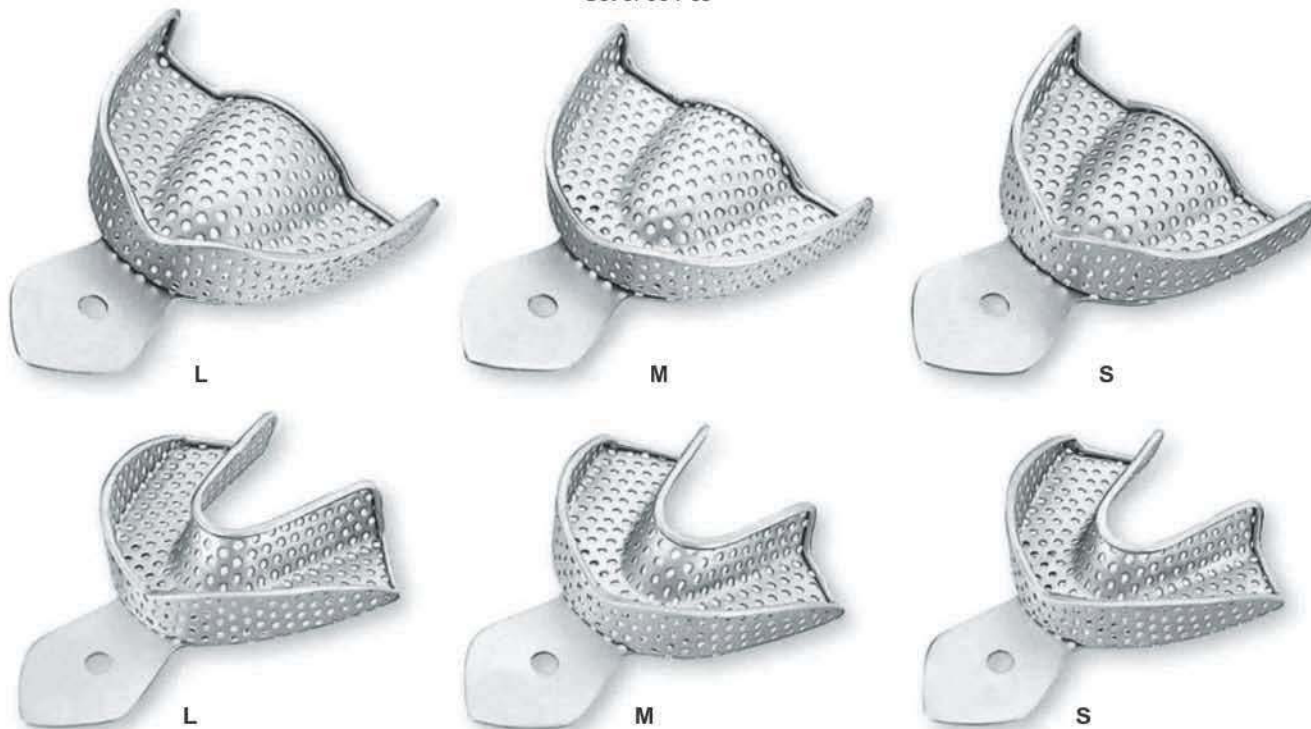
**MD-2414**  
Ø 3 mm  
length 180mm  
**MD-2415**  
Ø 4 mm  
length 180mm  
**MD-2416**  
Ø 5 mm  
length 180mm

## IMPRESSION TRAYS

- Оттисные ложки
- Porte-empreinte
- Abdrucklöffel
- Відбиткові ложки
- Cubetas para impresiones
- صواني الانطباع

### PERFORATED WITH RIM LOCK

Set of 06 Pcs

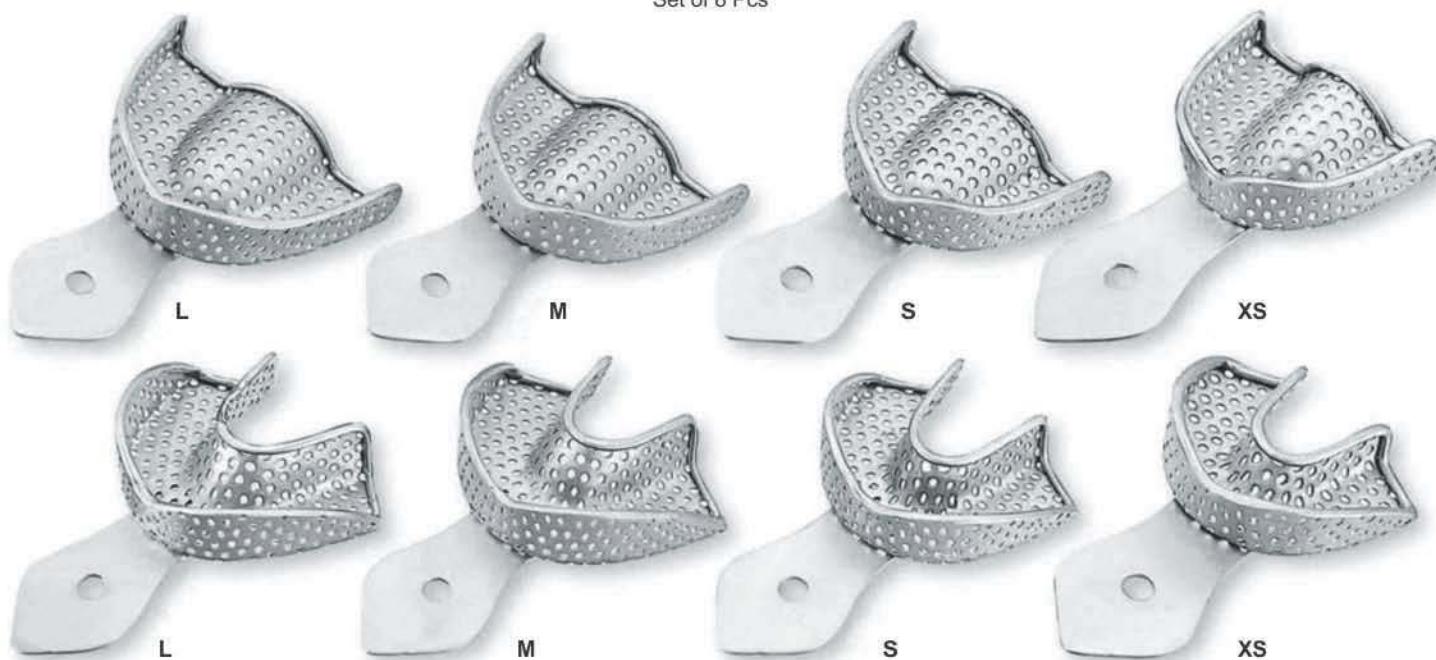


#### DE-2417 SET OF 06 PCS

Upper: S, M, L  
Lower: S, M, L

### PERFORATED WITH RIM LOCK

Set of 8 Pcs



#### MD-2418 SET OF 08 PCS

Upper: XS, S, M, L  
Lower: XS, S, M, L

#### MD-2419 SET OF 08 PCS

Upper: S, M, L, XL  
Lower: S, M, L, XL

#### MD-2420 SET OF 10 PCS

Upper: XS, S, M, L, XL  
Lower: XS, S, M, L, XL

# IMPRESSION TRAYS

- Оттисные ложки
- Porte-empreinte
- Abdrucklöffel

- Відбиткові ложки
- Cubetas para impresiones
- صواني الانطباع

## SOLID WITH RIM LOCK

Set of 6 Pcs



### MD-2421 SET OF 06 PCS

Upper: S, M, L  
Lower: S, M, L

## SOLID WITH RIM LOCK

Set of 8 Pcs



### MD-2422 SET OF 08 PCS

Upper: XS, S, M, L  
Lower: XS, S, M, L

### MD-2423 SET OF 08 PCS

Upper: S, M, L, XL  
Lower: S, M, L, XL

### MD-2424 SET OF 10 PCS

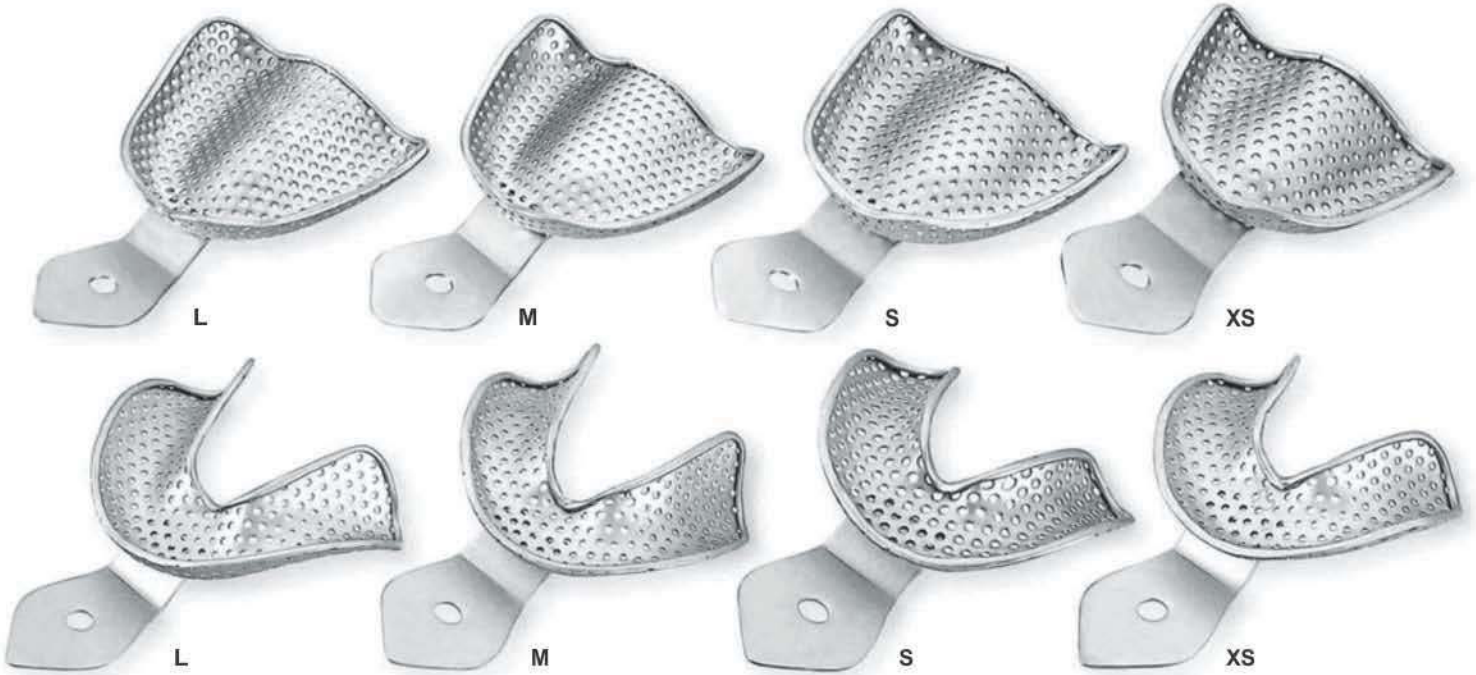
Upper: XS, S, M, L, XL  
Lower: XS, S, M, L, XL

## IMPRESSION TRAYS

- Оттисные ложки
- Porte-empreinte
- Abdrucklöffel
- Відбиткові ложки
- Cubetas para impresiones
- صواني الانطباع

### PERFORATED FULL DENTURE

Set of 8 Pcs

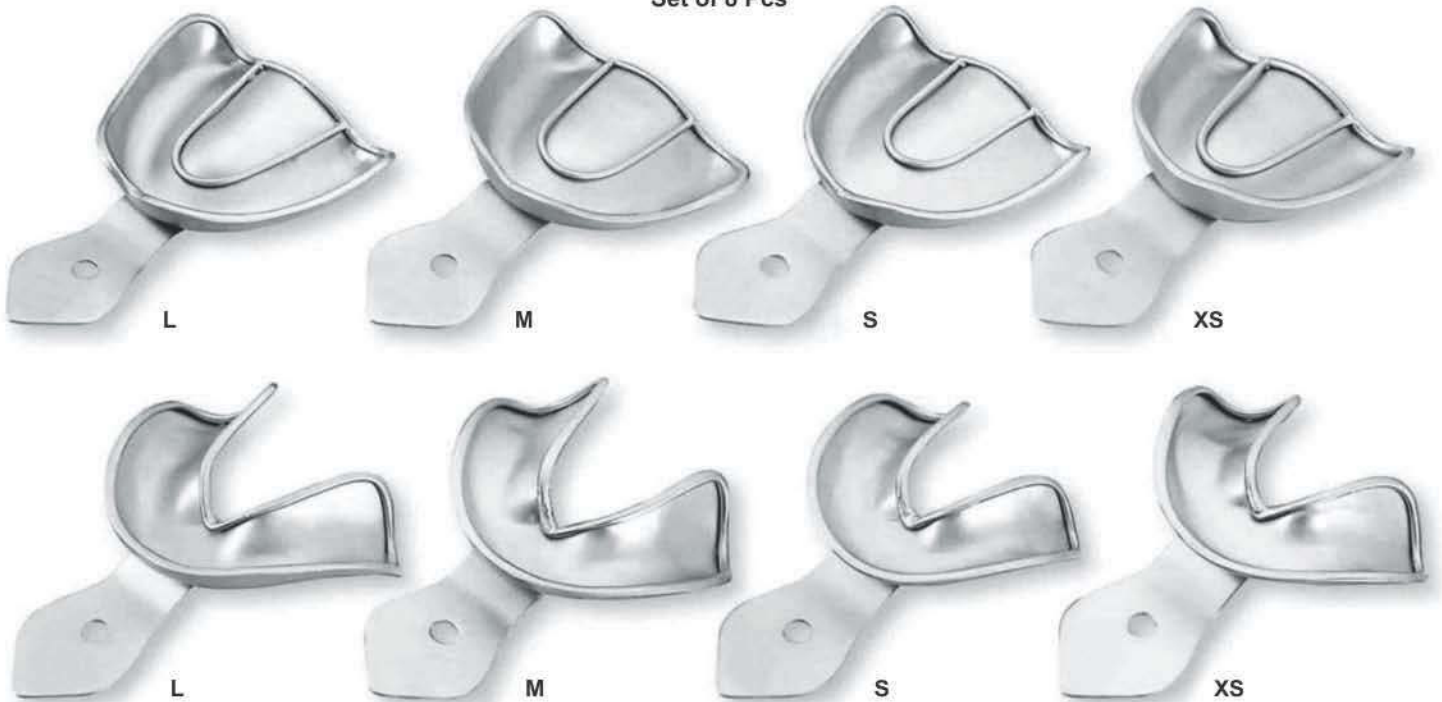


**MD-2425 SET OF 08 PCS**  
Upper: S, M, L, XL  
Lower: S, M, L, XL

**MD-2426 SET OF 08 PCS**  
Upper: S, M, L  
Lower: S, M, L

### SOLID FULL DENTURE

Set of 8 Pcs



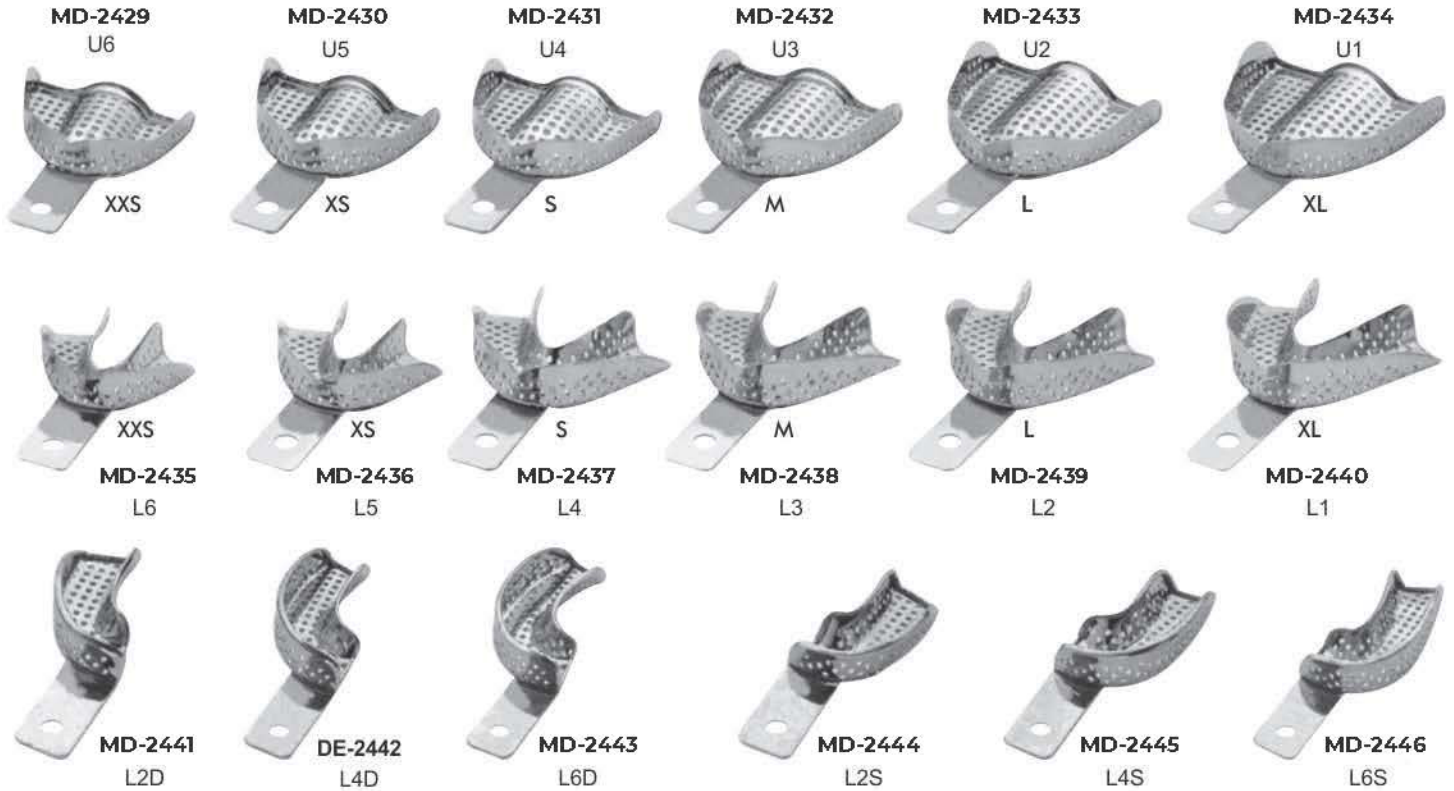
**MD-2427 SET OF 08 PCS**  
Upper: S, M, L, XL  
Lower: S, M, L, XL

**MD-2428 SET OF 06 PCS**  
Upper: S, M, L  
Lower: S, M, L

# IMPRESSION TRAYS

- Оттисные ложки
- Porte-empreinte
- Abdrucklöffel
- Відбиткові ложки
- Cubetas para impresiones
- صواني الانطباع

## Perforated Without Rim Lock



## Solid With Rim Lock

